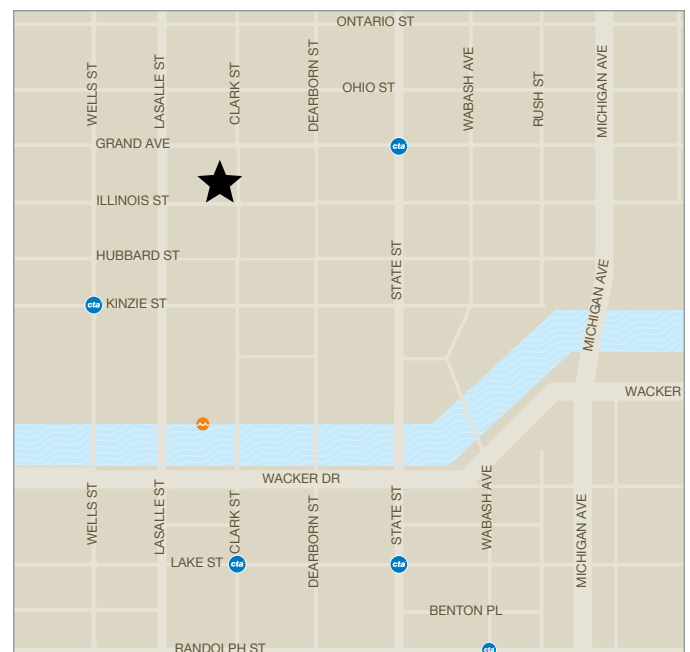


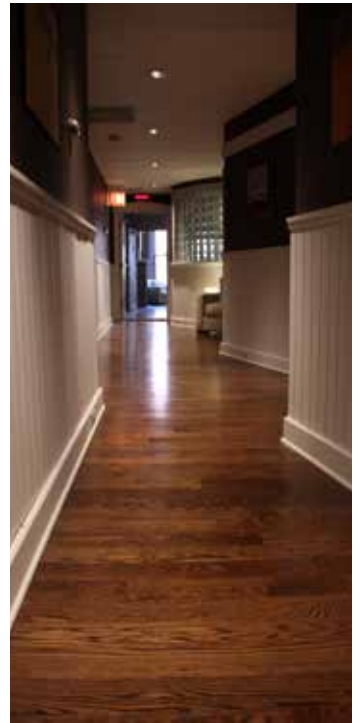
506-508 N Clark



Erected in 1880 by Jonathan H.P. Dodge 506 N Clark was originally conceived as a combination retail and apartment building. The high quality of the building's design—including its finely detailed sandstone façade—was indicative of the increased acceptance of apartments as first-class accommodations in the early 1880s.



506-508 N CLARK

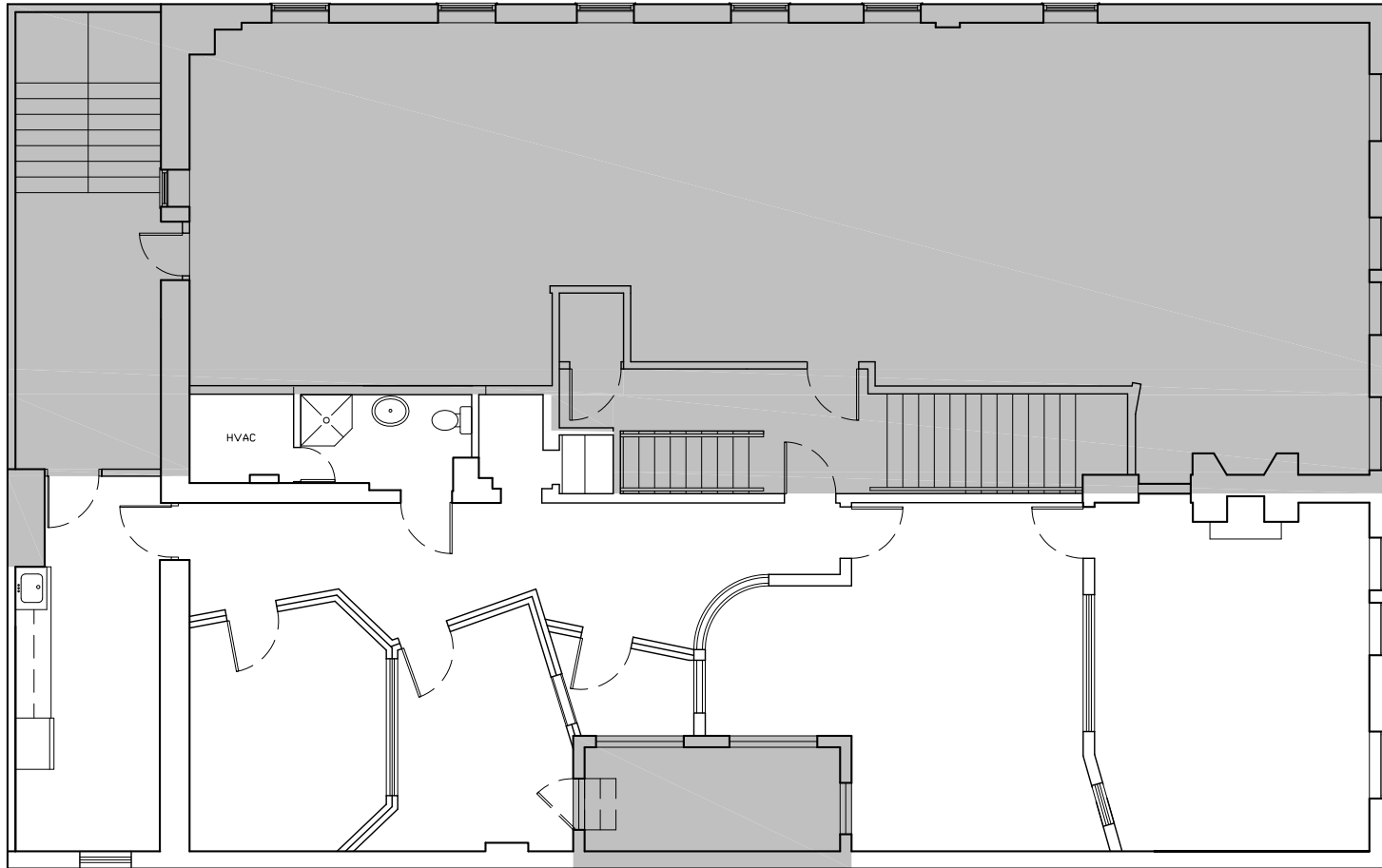


Interior photos are representative samples only and may not reflect conditions of vacancies.

312-644-1100 | friedmanproperties.com
Friedman Properties, Ltd. 350 N. Clark St, Chicago, IL 60654

All information is subject to change without notice.





Note: Subject premises is unshaded